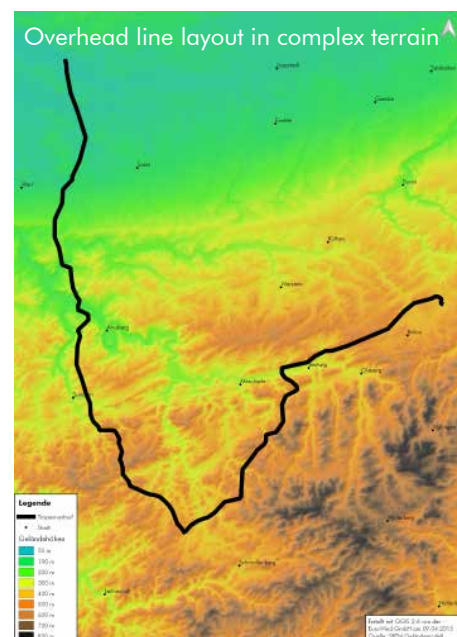


Monitoring of Overhead Lines

Weather-based monitoring systems for overhead lines optimise the transmission capacity. EuroWind analysed overhead lines in two reference projects about adaptive monitoring systems in order to identify meteorologically and technically induced „hot-spots“.

The key features of our services are:

- GIS analysis of the overhead line's height profile based on high resolution terrain data
- Wind, temperature, and radiation data in high resolution
- Transfer of the meteorological data to the overhead line's layout and profile in complex terrain
- Provision of multi-year meteorological time series in high temporal resolution for arbitrary sections of the overhead line
- Combined consideration of technical and meteorological influencing factors
- Detailed analysis of the maximum transmission capacity with the Cigré model
- Identification of local „hot-spots“
- Application to high- and middle- overhead lines in Europe
- Determination of the probability of exceeding the lines capacity under permanent load



Did we catch your attention?

Please feel free to contact us if you have any questions. We are happy to assist you.

EuroWind GmbH
 Contact: Herbert Koch
 Phone: +49 (0)221 57 95 60-04
 E-mail: gutachter@eurowind.info